

CARUSO

A BELMOND HOTEL
AMALFI COAST

DISCOVER OUR HOTEL

WELCOME TO THE LEGENDARY WORLD OF BELMOND

CARUSO

AMALFI COAST



PERCHED ON A CLIFF EDGE 1,000 FEET ABOVE SEA LEVEL, THIS HEAVENLY RETREAT IS YOUR PRIVATE BALCONY OVERLOOKING THE AMALFI COAST. THE RESTORED 11TH-CENTURY PALACE, SET AT RAVELLO'S HIGHEST POINT, IS RENOWNED FOR ITS IMMACULATE GARDENS FILLED WITH FRAGRANT ROSES AND LEMON TREES AND ITS RICH INTERIORS BRIMMING WITH ORIGINAL FRESCOS, VAULTED CEILINGS AND ANTIQUES.

As well as sumptuous accommodation, guests enjoy a spectacular heated infinity pool, serene Wellness Centre and acclaimed restaurant with stunning outdoor terraces. When the world outside calls, our complimentary shuttle whisks you to nearby Amalfi and Positano to explore. We also offer a daily mini-cruise, enabling you to admire the picturesque coast from the clear, azure water.

STAY IN STYLE

Choose from 50 spacious rooms and suites, each imbued with their own individual style. Most afford sea views from their terraces and many enjoy a private garden. The décor embraces Neapolitan style and tradition and a number of rooms are furnished with 18th- and 19th-century antiques or decorated with charming ancient frescoes.

SUPERIOR ROOM WITH GARDEN (6)
AVERAGE SIZE: 42-50 SQ M (452-538 SQ FT)
Located just in front of the entrance or in the main building, Double Village Rooms offer a delightful

garden view and are furnished with a king-size or twin beds. Large bathrooms feature separate shower cubicle, bathtub, bidet and double vanity basins. One room is wheelchair-accessible and features two bathrooms. Many have a private terrace or garden. No connecting rooms. Max occupancy: 2 people.

GARDEN VIEW ROOM WITH TERRACE (5)
AVERAGE SIZE: 35-45 SQ M (377-484 SQ FT)
Double Superior Rooms are located in the main hotel building and offer an enchanting garden or village view. They are furnished with either a king-size or twin beds. The generous marble bathrooms have a separate shower cubicle, bathtub, bidet and double vanity basins. Three rooms are connecting. Max occupancy: 2 people.

DELUXE SEA VIEW ROOM WITH BALCONY (6)
AVERAGE SIZE: 40-50 SQ M (430-538 SQ FT)
A terrace or balcony with spectacular sea views distinguishes these lavish rooms in the main building. Each offers a king-size or twin beds and a large marble bathroom with separate shower cubicle, bathtub, bidet and double vanity basins. Two of the rooms are wheelchair-accessible and contain two bathrooms. No connecting rooms. Max occupancy: 3 (one extra bed can be added in all rooms).

SUPERIOR SEA VIEW JUNIOR SUITE WITH GARDEN (4)
AVERAGE SIZE: 45-50 SQ M (484-538 SQ FT)
Blending light, airy spaces with beautiful historic features, these suites in the main hotel building offer beautiful views of the Bay of Salerno from their terraces. Bedrooms are furnished with a king-size or twin beds. Expansive bathrooms feature a separate shower cubicle, bathtub, bidet and double vanity basins. Two rooms are connecting. Max occupancy: 3 (one extra bed can be added in all rooms).

CARUSO

AMALFI COAST



DELUXE SEA VIEW JUNIOR SUITE WITH BALCONY (5)
AVERAGE SIZE: 50-60 SQ M (538-646 SQ FT)
Each of these suites boasts breathtaking views of the ocean and coastline from either a balcony or terrace, which is equipped with sunbeds, a table and chairs. One also offers a private garden. Bathrooms are large and have a separate shower cubicle, bathtub, bidet and double vanity basins. One room is wheelchair-accessible and features two bathrooms. One room is connecting. Max occupancy: 3 (one extra bed can be added in all rooms).

PREMIUM SEA VIEW JUNIOR SUITE WITH TERRACE (10)
AVERAGE SIZE: 50-60 SQ M (538-646 SQ FT)
A spacious entrance leads to a stylish bedroom with a choice of one king or two twin beds. Spectacular views of the sea are enjoyed from either a balcony or terrace, which is furnished with a table and chairs. Some suites also offer a private garden with sunbeds. Marble bathrooms are large and have a separate shower cubicle, bathtub, bidet and double vanity basins. Six rooms are connecting. Max occupancy: 3 (one extra bed can be added in all rooms).

SUPERIOR SUITE (2)
AVERAGE SIZE: 55-60 SQ M (592-646 SQ FT)
A generous living area is dotted with majestic design details in this suite, which boasts enchanting views over the village (no balcony). Located in the main building, it offers a bedroom with a king-size or twin beds and a separate living area. The bathroom features a separate shower cubicle, bathtub, bidet and double vanity basins. No connecting rooms. Max occupancy: 3 (one extra bed can be added).



SEA VIEW SUITE WITH GARDEN (4)
AVERAGE SIZE: 50-60 SQ M (538-646 SQ FT)
High ceilings and expansive windows create a natural sense of flow in these light-filled suites, which feature breathtaking views of the Amalfi Coast and private, panoramic gardens equipped with sun beds. Located in the main building, each suite enjoys an open, Mediterranean-style layout and airy ambience. The living area and bedroom are decorated in elegant Italian style with local antiques. Marble bathrooms feature double vanity basins, a large shower cubicle and separate bathtub. Rooms are connecting. Max occupancy: 3 (one extra bed can be added).

DELUXE SEA VIEW TERRACE SUITE (5)
AVERAGE SIZE: 58-65 SQ M (624-700 SQ FT)
Located in either the main hotel building or the gardens, these suites offer spectacular sea views and magnificent terraces furnished with sunbeds and a table and chairs. Bathrooms are generously proportioned and feature separate shower cubicle, bathtub, bidet and double vanity basins. All the rooms have a king-size bed or twin beds and separate living areas. Two rooms are connecting. Max occupancy: 4 (two extra beds can be added in each room).

CARUSO SUITE (3)
AVERAGE SIZE: 90-95 SQ M (969-1,023 SQ FT)
These sumptuous suites enjoy ocean vistas from their private gardens and terraces. Furnished with a king-size or twin beds, they benefit from a beautiful separate living area, perfect for relaxation. A private terrace, equipped with deck chairs, is ideal for enjoying breakfast, lunch or dinner served by a butler as you gaze over the Amalfi Coast. Generous bathrooms feature a separate shower cubicle, bathtub, bidet and double vanity basins. One room is connecting. Max occupancy: 4 (two extra beds can be added in each room).

CARUSO

AMALFI COAST



ENJOY FANTASTIC FACILITIES

All accommodation includes: Air conditioning • 24-hour room service • Minibar • Complimentary WiFi • Twice-daily housekeeping service • Satellite TV • eReaders with over 3,000 periodicals in 18 languages • Courtesy line by Acqua di Parma

KRUG TABLE

Gather around a unique table, fashioned from an 18th-century door that once graced the old Caruso palace. Sit on chic chairs adorned with Emilio Pucci fabrics and dine on the Chef's exceptional menu, featuring the freshest local produce, paired with Krug Champagne. Available from May to October.

WINING AND DINING

RISTORANTE BELVEDERE

Take a seat on the spectacular outdoor terrace or the alfresco area close to the pool and feast on gourmet regional cuisine as you admire the most romantic views of the Amalfi Coast. Open during the summer months. Dinner: 19:30-22:30.

RISTORANTE CARUSO

Choose a table in our elegant dining room with stunning coastal views and enjoy local specialities. Breakfast: 07:30-10:30.

POOL GRILL

With the stunning infinity pool as your backdrop, indulge in delicious salads, pastas and Neapolitan pizza straight from the brick oven.

Lunch: 13:00-16:00.

Bar: 09:00-19:00.

Dinner available during the summer months.

BAR CARUSO

Join us in our atmospheric bar for early-evening cocktails or a late-night digestif. Feast your eyes on the magnificent 18th-century frescoes and the vistas over the Amalfi coastline. Enjoy piano music from 19:00 till late in the lounge area.

Open 17:00-01:00.

COMPLIMENTARY SERVICES

BEACH CLUB ACCESS

Let us whisk you away to live your best beach life on the Amalfi Coast. Our courtesy shuttle will escort you to the harbour, from there sail to a secluded paradise by private boat. Arrive on the pristine shores of a charming beach, where sun loungers and parasols await. Towels supplied.

BOAT CRUISE

Explore the picturesque coastline aboard our charming wooden boat. Complimentary round-trips leave from Amalfi at 10:15 each morning.

COURTESY SHUTTLE

Board our complimentary shuttle to visit the enchanting town of Amalfi. A regular service departs and returns throughout the day.

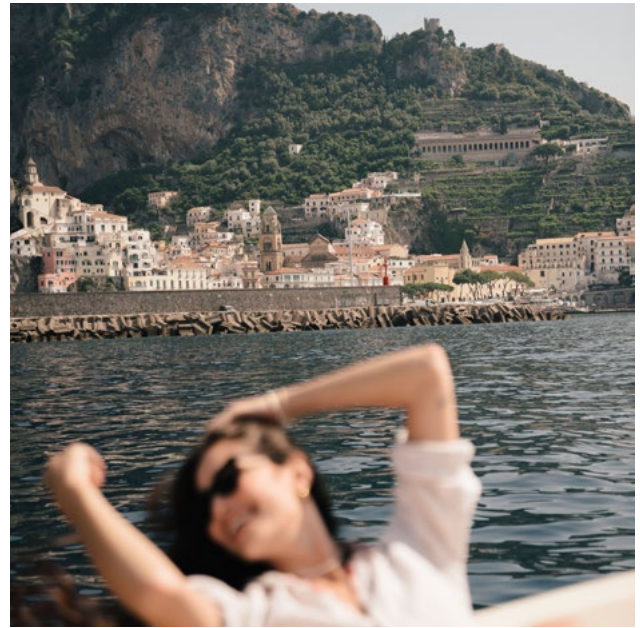
RELAX AND KEEP FIT

SWIMMING POOL

While away blissful hours in and around our heated, outdoor infinity pool, where the sea meets the sky. Relax on a sunbed and let our concierge bring you an iPod loaded with your favourite tunes. Towels supplied.

CARUSO

AMALFI COAST



FITNESS CENTRE

Re-energise with a workout in our open-air gym, enjoying a full range of cardio equipment, weight machines and panoramic views. Download the Mywellness app to access a full range of workouts and if you want to train in your accommodation or in the gardens, ask reception for the Technogym Case. A personal trainer is available upon request.

WELLNESS CENTRE

Soothe your mind and body at our sublime Wellness Centre. Enjoy Mediterranean-inspired rituals in our indoor treatment rooms or sea-view gazebo.

GOLF

Tee off by the sea on Volturmo Golf Club's 18-hole course, approximately 1.5 hours' drive from the hotel.

BOUTIQUE

Browse handpicked gifts and items exclusively designed for Caruso. Our exclusive silky clothing range sports patterns inspired by the hotel frescoes.

FAMILY FUN

Our hotel is perfect for family adventures or relaxing stays with your little ones. We offer children's bathrobes, slippers and bottle warmers in your room. An extra bed and baby cots can be supplied in Junior Suites and Suites. You'll find tasty children's menus and highchairs in the restaurants and PlayStation, iPods, DVDs and toys at the Concierge desk. We offer dedicated spa treatments for children in our Wellness Centre, and activities including ceramic classes, pizza-making and sailing trips along the coast. A babysitting service is available on request.

FINER DETAILS

CHECK IN: 15:00

CHECK OUT: 12:00

CANCELLATION POLICY

HIGH SEASON

Cancellation requests received 14 days or less prior to arrival will incur a penalty of 100% of the value of the entire booking.

LOW SEASON

Cancellation requests received 3 days or less prior to arrival will incur a penalty of 100% of the value of the entire booking.

Early departure fee and no-show penalty: 100% of the value of the entire booking. The cancellation policy may vary when booking a specific rate or package. If the value of your booking is more than 25,000 Euros, special cancellation policies will apply.

DEPOSIT

A deposit is required for non-refundable Advance Purchase rates. Full prepayment is required at time of booking and is non-refundable in case of change/cancellation. A deposit is also required if the value of your booking is more than 25,000 Euros.

PET POLICY

We allow small pets in the rooms. Please keep them out of communal areas and ensure dogs are on lead around the hotel and grounds.

EXTRA BEDS

Available on request for an additional fee.

CHILDREN

Children up to the age of 12 (inclusive) sharing a junior suite or suite with their parents enjoy a complimentary bed; meals charged as taken.

CARUSO
AMALFI COAST



ACCESSIBILITY

All our communal areas are wheelchair accessible. Rooms with disabled facilities are available. Our team is at complete disposal to provide any assistance required and suitable accommodation.

FIND US

BY AIR

NAPLES AIRPORT CAPODICHINO (NAP) - 65km;
60 minutes by car.

BY TRAIN

Naples Central Station - 64km; 60 minutes by car.
Train services from Milan, Venice, Florence and Rome.

BY CAR

Fastest route: take the Naples-Pompeii-Salerno highway. Exit at Angri. Follow signs for "Valico di Chiunzi" and "Costiera Amalfitana", reaching Ravello via the pass ("valico").

Scenic route: take the Naples-Pompeii-Salerno highway. Exit at "Vietri Sul Mare". Follow signs for "Costiera Amalfitana" and "Ravello", passing Cetara, Maiori and Minori. (Note, this route can be very busy at weekends and on public holidays).

BY HELICOPTER

Helicopter transfer from Naples or Rome airport to the town of Scala, a few minutes by private car from the hotel.

CARUSO
A BELMOND HOTEL
AMALFI COAST

CARUSO
PIAZZA SAN GIOVANNI DEL TORO 2, 84010 RAVELLO, SALERNO, ITALY
T: +39 089 858 801 E: RESERVATIONS.CAR@BELMOND.COM
BELMOND.COM