



SANTAVENERE

MARATEA · ITALY





THE PROPERTY

A timeless place cradled by the sea

The beauty of limitless spaces enveloped by greenery.

The experiences are as unique and intense as the waves.

A cosy home where you always feel welcome

Santavenere is an endless story

An ancient charm surrounded by Nature

Santavenere stretches for more than three thousand square meters and maintains its antique charm through 34 guest rooms and eighteenth-century style large living rooms. The hotel is immersed in the green Mediterranean Shrub and a short walk from the fully equipped private beach.





POSIZIONE E COME ARRIVARE

In Auto

Da Bari: prendere E843, S.da Statale 106 Jonica/E90, SS653, SS585 e SS 18 Tirrena Inferiore in direzione di Strada Provinciale Maratea – Castello a Maratea.

Da Napoli: seguire A3 e E45 in direzione di SS585 a Lagonegro. Prendere l'uscita Lagonegro Nord da E45. Continuare su SS585 fino alla tua destinazione a Maratea

Da Potenza: prendere E847. Guida da SS95var, SS 598 di Fondo Valle d'Agri/SS598, E45 e SS585 a Trecchina. Prendere Strada Provinciale 3 Tirrena/SP3 in direzione di SS 18 Tirrena Inferiore a Maratea. Continuare su SS 18 Tirrena Inferiore (indicazioni per Fiumicello/Cersuta/Acquafredda/Sapri/Porto/Stazione).
Prendere Strada Provinciale Maratea – Castello e Via Conte Stefano Rivetti di Val Cervo fino a destinazione.

In Treno

La stazione ferroviaria più vicina è Sapri (Salerno), a 10 minuti da Maratea.

La stazione di Maratea dista:

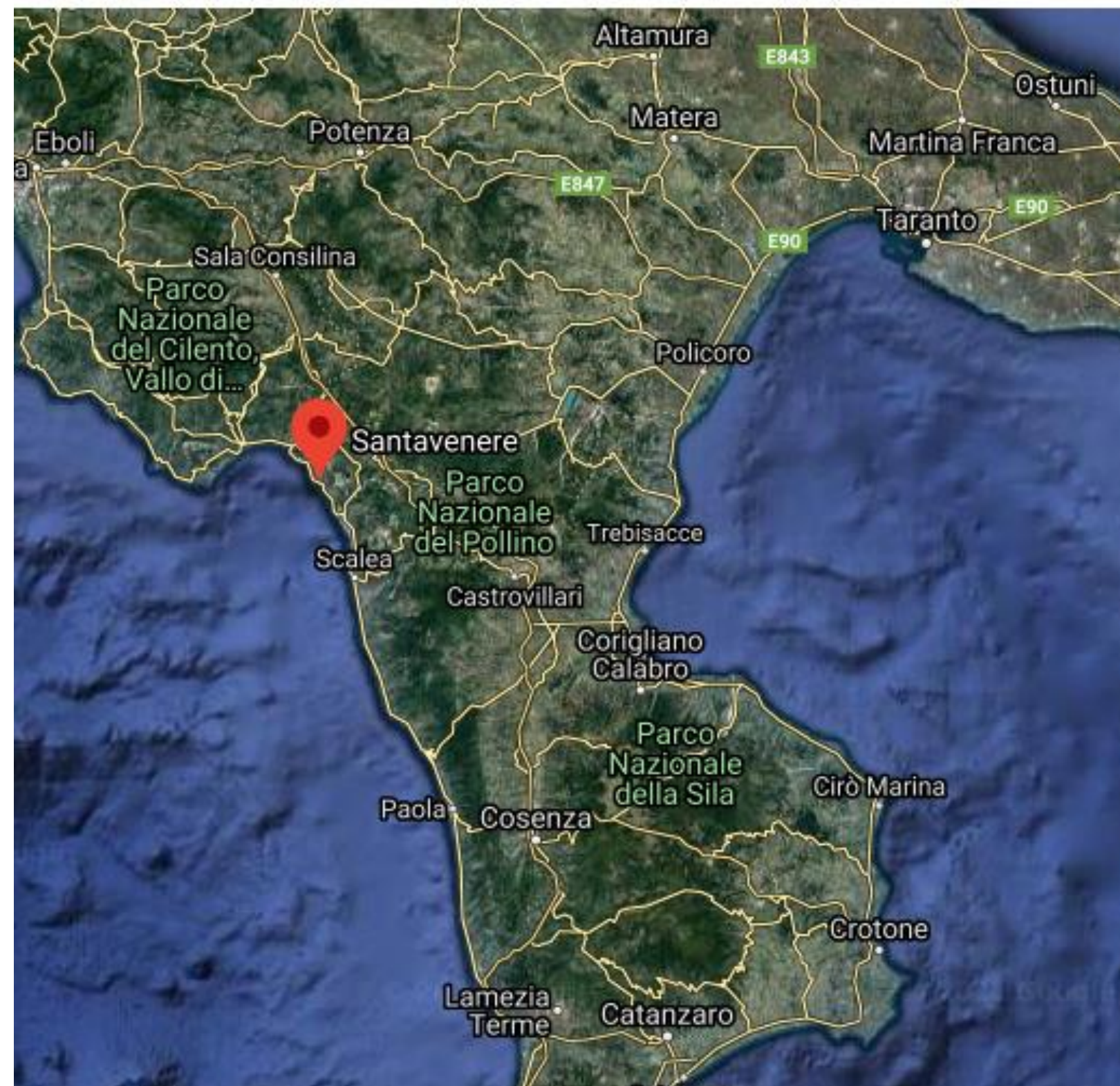
- 3 ore e 40 minuti dalla stazione di Roma Termini;
- 2 ore e 20 minuti dalla stazione di Napoli Centrale;
- 6 ore e 30 minuti dalla stazione di Bari Centrale.

Aeroporti

Bari (tel. 080.5835204) è distante 270 km, 3 ore e 15 minuti in auto.

Brindisi (tel. 0831.411711) è distante 270 km, 3 ore e 20 minuti in auto.

Napoli è distante 210 km, 2 ore e 30 minuti in auto.





THE HISTORY

Between 1951 and 1952, **Count Stefano Rivetti**, a member of one of the largest families of the Piedmontese wool industry, chooses Maratea for its beauty, the geographical area and the proximity with the regions of Calabria and Campania, to start a business and tourism expansion project.

In the 50's, the birth and development of tourism in Maratea started with **Fiumicello**, one of the most enchanting coastlines of the area. Here, the Count creates the first textile factory in 1953.

Realizing the tourism potential of this place, he started to build the **Santa Venere, the first 5-star luxury hotel** in the south of Italy, opening in 1957. The hotel – attracting high-end customers – was immediately known as the **Lucanian "jewel"** in every corner of the world





FAMOUS GUESTS

A Destination, home to some important guests, Maratea was not only the scene of concerts with famous artists such as Domenico Modugno, but also films with internationally renowned actors, such as Anita Ekberg, Silvana Pampanini, Raf Vallone, Peppino De Filippo and famous people such as Luciano de Crescenzo, Camilla Cederna, Indro Montanelli, the **Prince and Princess Alberto and Paola di Liegi** and Pat Metheny.





CONCEPT

A large Home for a few Guests

Through the concept of, Luxury being a synonym of space, immersion in nature, wellbeing of body and mind and tailor-made experiences. Santavenere is the best place to fully understand this philosophy.

It stretches for more than three thousand square meters, with guest rooms and large communal areas. The light shining through the windows of the living rooms caress the precious object which can be found inside, designed by time and the keeper of memories.

Surrounding the property, the heady scent of the sea, ten hectares of parkland and access to the private pebble beach.

Feast your eyes on the beauty and feel liberated by the sense of pure freedom: this is Santavenere's mission.









THE TERRITORY

Looking out of the window is always a breath-taking experience.

The golden light of the morning or the burning red of the sunset over the sea: every window of Santavenere is like a painting with a thousand colours. Let yourself be amazed by the sea, by the mountains covered in Mediterranean vegetation and by the varied landscape of Maratea always offering up new emotions.

Get lost in the emerald-green surroundings of the Santavenere.

The ten-hectare park with its unique Mediterranean landscape typical of this area with Turkey oaks, maple trees, pine trees and the perfume of broom, cornflowers and primroses. The colourful shrubs and vivid bougainvillea brighten the countryside during the summer, with an explosion of colours. The outdoor spaces are designed to allow guests to discover their favourite spot, enjoying the peace and tranquillity of this unique place. Shades of green embrace Santavenere all year round.

Walking surrounded by the silence of Nature

The pathways allow for long walks on foot or by golf cart, the secret trails leading to the sea slowly reveal some incredible views. Discovering Santavenere is an endless and unique experience. Get lost to find yourself, discover and be amazed.





THE SPACE

Relaxation is the key.

Enjoy a moment of relaxation in the large living rooms or find a peaceful corner in the shade of the patio by the pool and all the while surrounded by natural beauty.

A fireplace with a crackling fire, huge windows overlooking the landscape and the scent of the wood make every moment of the day perfect.

Go back in time and breathe in the history.

The furnishings create a sense of place and welcome guests like the perfect host. Furniture from the late 1700's and traditional Lucanian textiles create an intimate atmosphere, full of history. From the communal areas to the guest rooms, as if everything was suspended in time.

The Maratea pink tiles, the embroidered curtains, the collectables hidden in every corner: the attention to detail is a precious art.

Spend some time for yourself or share it with your loved ones.

Choosing your ideal place to spend your free time during the spring and summer days is a real challenge: reading a newspaper in one of the wicker armchairs in the shade of a gazebo or by the pool, relaxing on a sofa under the white wooden patio, enjoying a delicious snack at the bar or let yourself be enchanted by the views of the sea while lying on a sun lounger.

Conviviality has the sparkling taste of a summer evening.





THE ROOMS - with Garden View



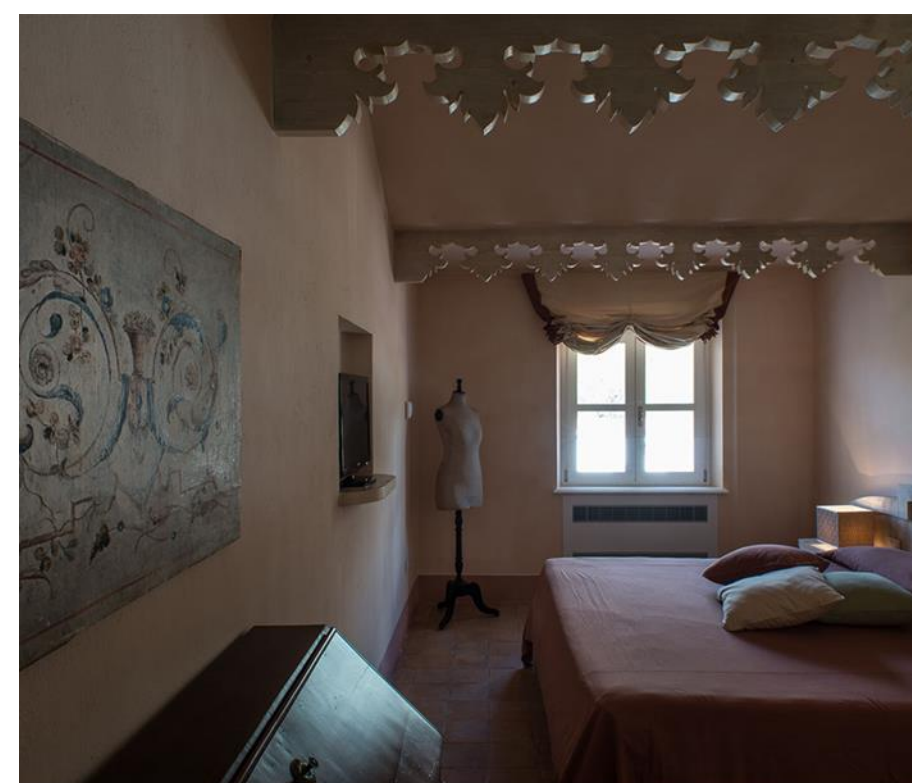
GARDEN VIEW SUPERIOR ROOM

Superior room for two guests, with balcony or window overlooking the garden. 22 square meter room with private bathroom with bathtub.



GARDEN VIEW GRAND PREMIUM ROOM

Grand premium room for two or three guests, with living room, terrace or balcony overlooking the garden. 60 square meter independent room, with private bathroom with bathtub, shower and double sink.



GARDEN VIEW DELUXE SUITE

Suite for two or three guests with balcony or terrace overlooking the garden. 46 square meter room with large private bathroom with bathtub or shower.



THE ROOMS – with Sea View



SEA VIEW PREMIUM ROOM

Premium Room for two guests, with walk-in closet and balcony with sea view. 22 square meter room with private bathroom with bathtub.



SEA VIEW DELUXE ROOM

Deluxe room for two guests, with balcony or terrace overlooking the sea. 22 square meter room with private bathroom with large shower or bathtub.



SEA VIEW DELUXE SUITE

Suite for two or three guests with walk-in closet, balcony or terrace with an enchanting sea view. 53 square meter room with private bathroom with large bathtub and/or shower.



THE BARS AND RESTAURANTS

Bar - Hall - Gli Ulivi - Il Carrubo

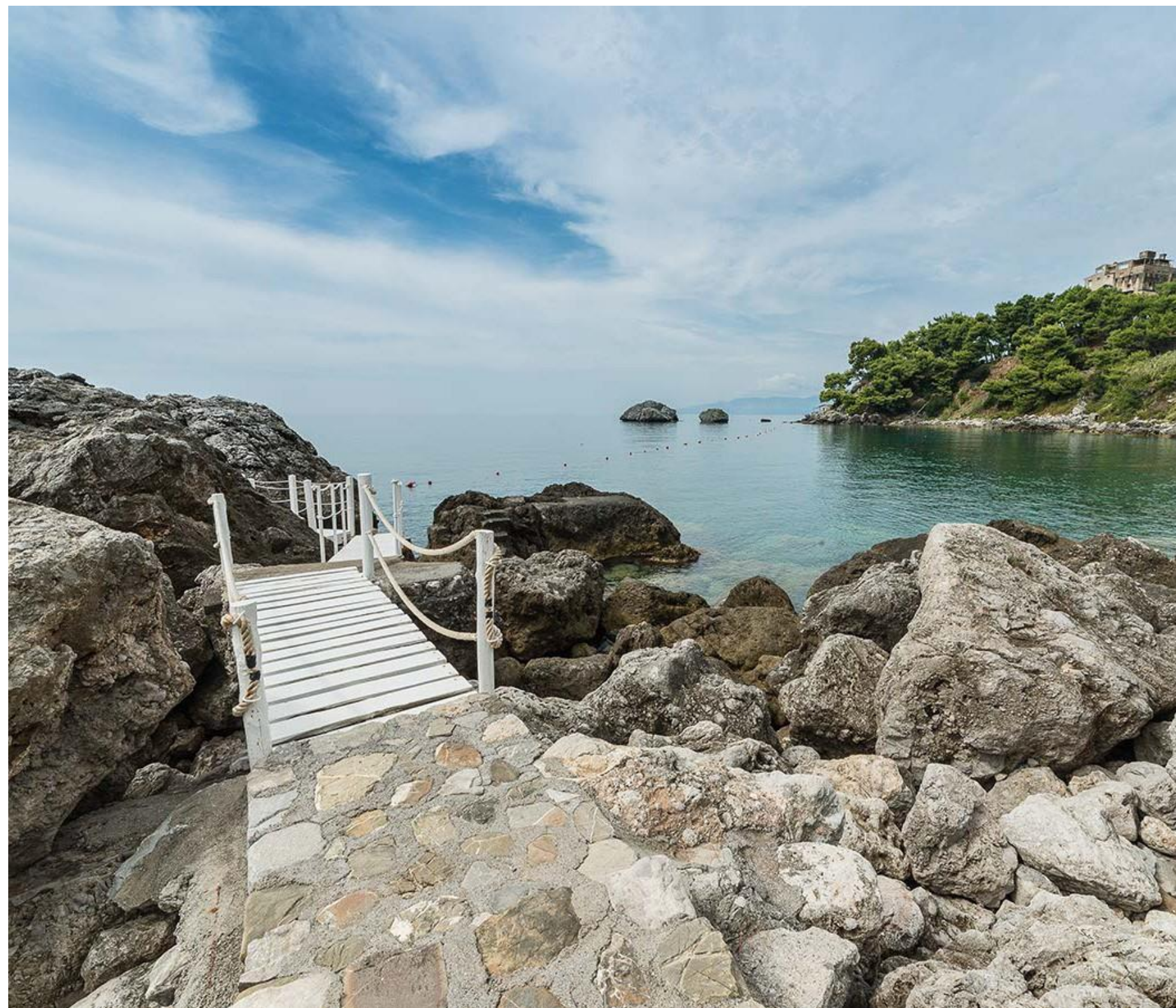
Experimenting and Searching for the perfect taste.

Our three bars are always open to ready to satisfy guests' requests.

Hall is the indoor bar that offers a selection of spirits and refined teas and coffees. The perfect place to have a delicious home-made dessert.

Ulivi creates unique cocktails by taking traditional flavours and then giving them a twist, looking for the ideal balance between beauty and flavour. A refreshing drink, infusion or herbal teas for a relaxing afternoon.

Carrubo is surrounded by the macchia Mediterranea and has a wonderful view of the bay. Make your day at the beach enjoyable: have an aperitivo in the fading light of the sunset.





GLI ULIVI

The goodness of simple flavours.

The poolside restaurant offers light, fresh and tasty dishes for a quick meal, brunch or aperitivo.

Surrounded by the olive and lemon trees of the enchanting garden, the light breeze coming from the sea and the scent of the aromatic plants will seem like a perfect dream.



IL CARRUBO

The freshness of our produce.

A simple and elegant terrace overlooking the sea, a short walk from the pier. In this restaurant, guests can enjoy the catch of the day, choosing it directly from the counter while indicating their preferred cooking method.

The typical flavours of the sea, for lovers of fresh fish and romantic sunsets on the sea.



LE LANTERNE

A bond with Tradition.

The gourmet restaurant of Santavenere offers traditional Italian cuisine with a modern twist. The tasting menus, carefully designed by our Chef, will take you on an emotional journey through local flavours and innovations in taste.

The picture windows of the indoor room overlook the sea and the large patio allows guests to dine outside during the hot summer evenings.



SPA

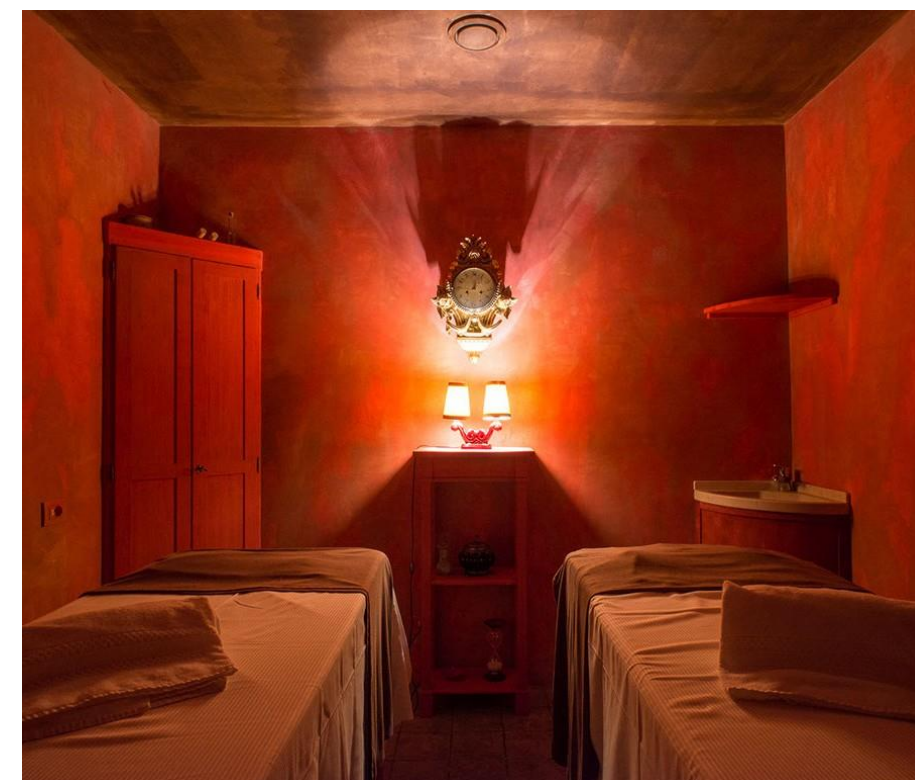
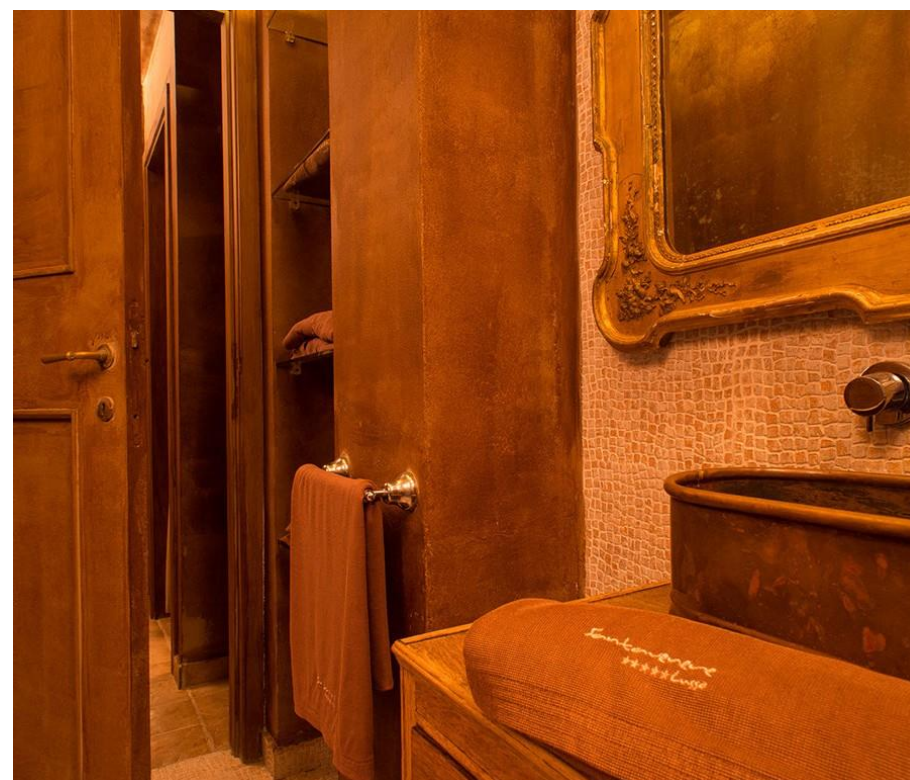
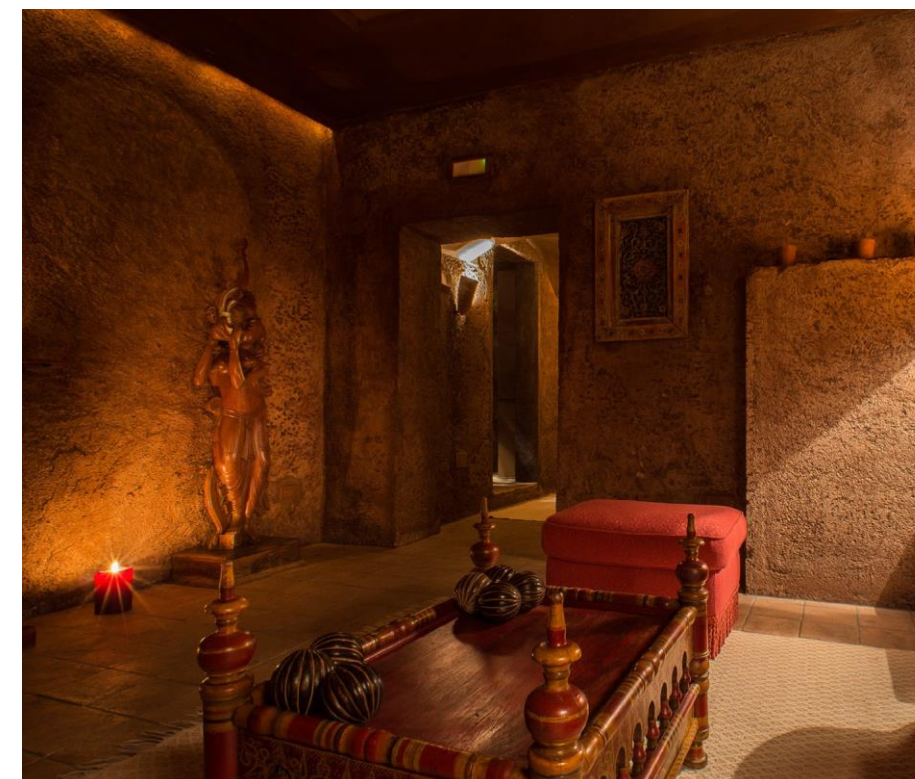
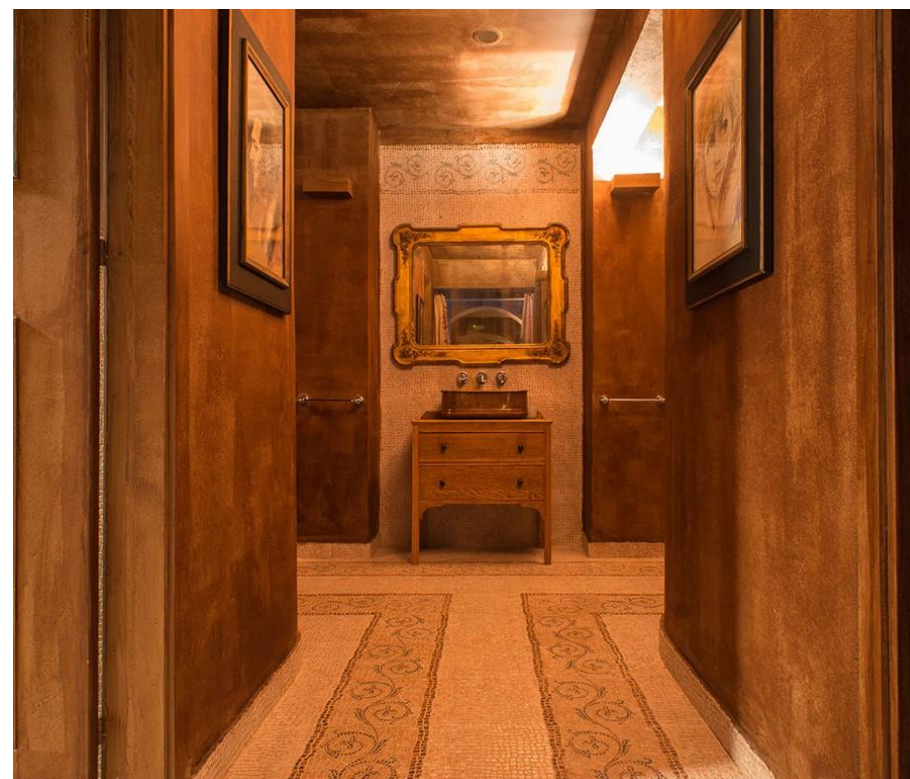
Rediscover your balance in the search for Happiness

The Spa at Santavenere celebrates the beauty of the Lucano area, where the sea and the mountains chase each other in a magical dance, alternating between gorges, inlets and caves.

Wellbeing is the balance between nature and local experiences, connection and emotion, spa treatments and programs tailor made for each guest. Essential oils, the scent of flowers, the sound of the sea: the senses are reborn and the heart holds a rainbow of emotions.

Allow yourself to be lulled by a massage that harmonizes body and mind, rediscover your natural beauty through a treatment inspired by antique traditions, allow yourself to be wrapped in the power of nature during a fitness class, relying on the loving care of our experts.

Rediscover a new vitality and uncover your personal happiness: this is the profound sense of this regenerative journey in the Spa at Santavenere.





I DINTORNI

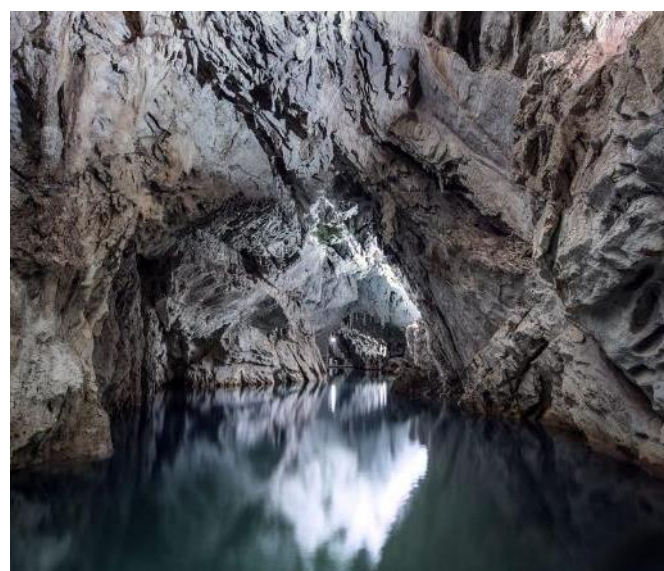
La spiaggetta di **Arcomagno** a San Nicola Arcella è una delle più suggestive e spettacolari di tutta la Calabria.
A 17 km dal Santavenere.

La **certosa di Padula**, anche conosciuta come **certosa di San Lorenzo** è un monastero in provincia di Salerno a Padula.
A 58 km dal Santavenere.

Le **Grotte di Pertosa-Auletta**, uno dei geositi focali del Geoparco “Cilento”, sono le uniche grotte in Italia dove è possibile navigare un fiume sotterraneo, ma anche le sole in Europa a conservare i resti di un villaggio palafitticolo risalente al II millennio a.C.
A 64 km dal Santavenere.

Il **Parco Nazionale del Pollino** è la più grande area protetta d'Italia e si estende tra i territori della Basilicata e della Calabria. Offre una moltitudine di paesaggi incantevoli, con grandi aree incontaminate e differenti a seconda dell'altitudine.
A 67 km dal Santavenere.

Situato a sud-est del Golfo di Salerno, nella parte meridionale della Piana del Sele, **Paestum** è un sito archeologico di estrema importanza, riconosciuto dall'Unesco Patrimonio dell'Umanità.
A 76 km dal Santavenere.





SANTAVENERE

MARATEA · ITALY